

NIGHT STICK

Life Depends on Light™

Multi-Function Flashlight-Floodlight-Dual-Light

Flashlight



Floodlight



Dual-Light



These non-rechargeable multi-function Dual-Lights use a single body switch offering the user a choice of flashlight, floodlight or dual-light operation. The compact oval design makes them convenient to use and carry. Their water resistant housings are made from engineered polymer and have a soft touch finish. The 1224 models have an integrated body magnet for hands-free use. Power comes from 2 included AAA batteries (1206) and 4 included AAA batteries (1224).



NSP-1224R

NSP-1224B

65 Flashlight
Lumens

100 Floodlight
Lumens

125 Dual-Light
Lumens

- 5 Hours run-time
- Integrated hands-free magnet (1224)
- Focused-beam flashlight
- Wide-area non-focused floodlight



NSP-1206R
NSP-1206B

NSP 1206/24
series



High-efficiency deep parabolic reflector

NIGHTSTICK

Life Depends on Light™

NSP 1224/06 series

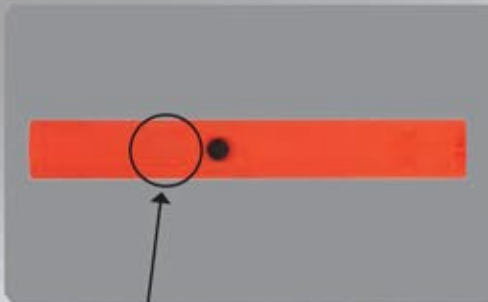
Multi-Function Flashlight-Floodlight-Dual-Light

FEATURES: ALL MODELS

- Bright LEDs – 35,000 + hours LED life
- Flashlight – floodlight – dual-light
- Soft-touch grip
- Water resistant
- Non-slip grip
- Comfortable oval shape
- Impact & chemical resistant polymer housing
- Integrated body magnet (1224 only)
- Powered by 4 AAA batteries (1224) & 2 AAA batteries (1206) included
- 1 Year Warranty***



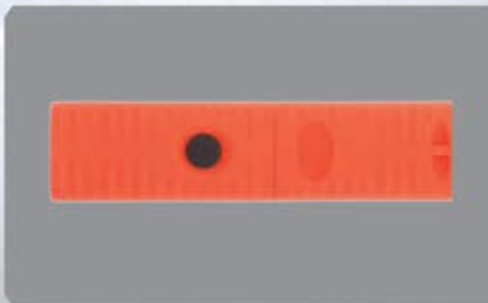
High-efficiency deep parabolic reflector (1224)



Integrated magnet with single switch control for flashlight floodlight and dual-light (1224)



Four bright LEDs (1206)



Single switch control for flashlight floodlight and dual-light (1206)



NSP-1206R



NSP-1206B



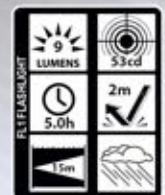
NSP-1224R



NSP-1224B

NSP-1206R SPECIFICATIONS

- Lumens: flashlight-9, floodlight-16, dual-light-17
- Run-time: flashlight-5 hrs, floodlight-7 hrs, dual-light-4 hrs
- Water rating: IP-X4 water resistant
- Drop rating: 2 meters
- Length: 4.4in, Width: 1.1 x 0.8in, Weight: 1.8oz



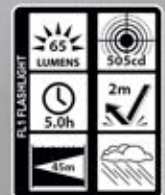
NSP-1206B SPECIFICATIONS

- Lumens: flashlight-9, floodlight-16, dual-light-17
- Run-time: flashlight-5 hrs, floodlight-7 hrs, dual-light-4 hrs
- Water rating: IP-X4 water resistant
- Drop rating: 2 meters
- Length: 4.4in, Width: 1.1 x 0.8in, Weight: 1.8oz



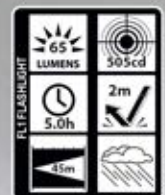
NSP-1224R SPECIFICATIONS

- Lumens: flashlight-65, floodlight-100, dual-light-125
- Run-time: flashlight-5 hrs, floodlight-2.5 hrs, dual-light-2.25 hrs
- Water rating: IP-X4 water resistant
- Drop rating: 2 meters
- Length: 7.9in, Width: 1.1 x 0.8in, Weight: 5.2oz



NSP-1224B SPECIFICATIONS

- Lumens: flashlight-65, floodlight-100, dual-light-125
- Run-time: flashlight-5 hrs, floodlight-2.5 hrs, dual-light-2.25 hrs
- Water rating: IP-X4 water resistant
- Drop rating: 2 meters
- Length: 7.9in, Width: 1.1 x 0.8in, Weight: 5.2oz



INCLUDED

- Flashlight
- 2 AAA batteries (1206) & 4 AAA batteries (1224)

Model	UPC 0 17398
NSP-1206B	80355 7
NSP-1206R	80356 4
NSP-1224B	80357 1
NSP-1224R	80358 8

*1 Year Warranty • Product is warranted to be free from defects in workmanship and materials for one year. Batteries, normal wear and abuse are excluded.



WWW.BIGREDTRUCK.COM.AU

