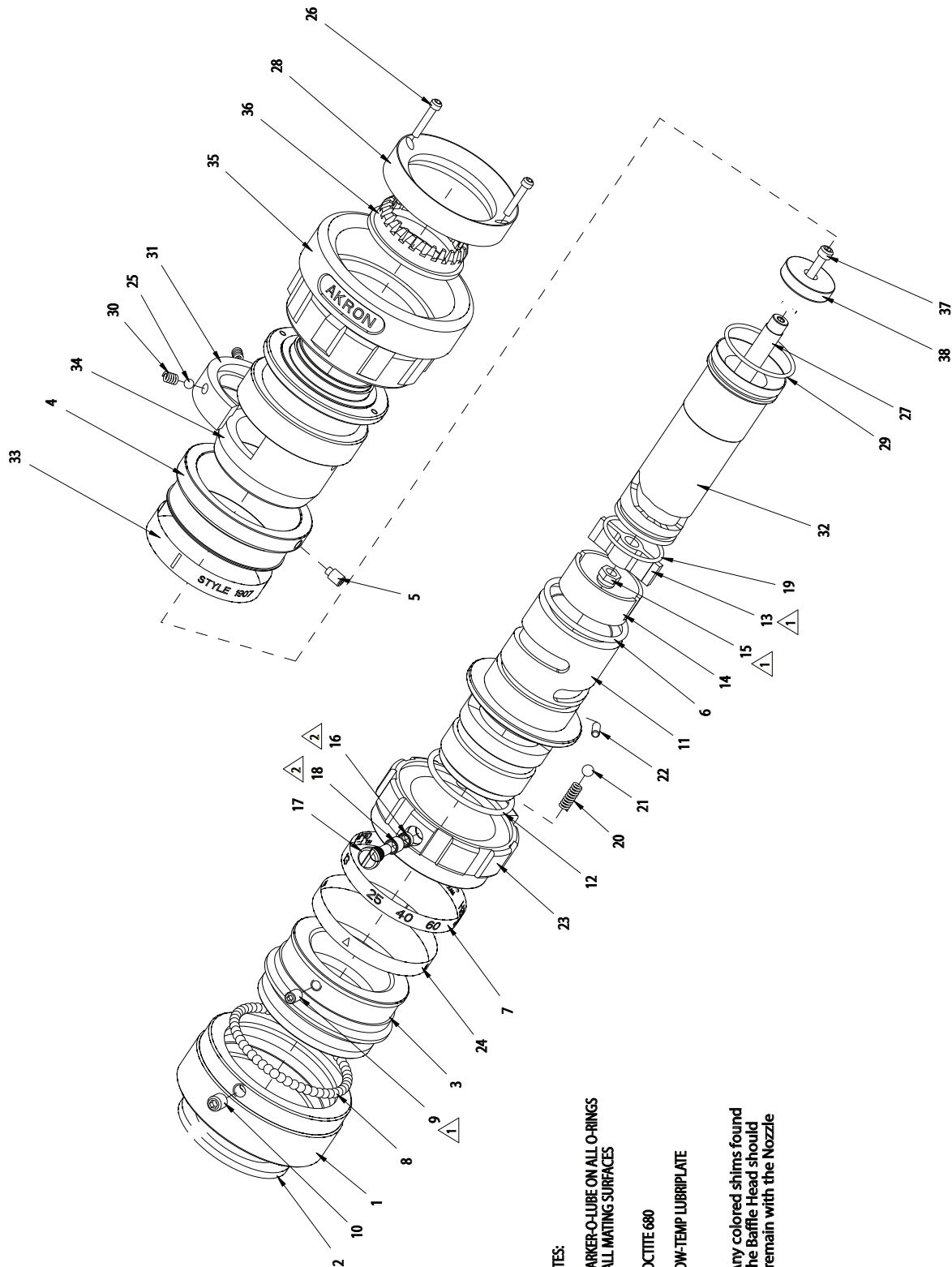


## TECHNICAL SERVICE PARTS



**ASSEMBLY NOTES:**

USE PARKER-O-LUBE ON ALL O-RINGS  
AND ALL MATING SURFACES

△ 1 USE LOCTITE 680

△ 2 USE LOW-TEMP LUBRIPATE

NOTE: Any colored shims found  
under the Baffle Head should  
always remain with the Nozzle

ITEM NO.	DESCRIPTION	PART NUMBER	QUANTITY		
			1703	1711 50-90-115 lpm	1711 50-115
1	Swivel 1 1/2" NH*	108313	1	1	1
1	Swivel 1 1/2" NPSH*	108314	1	1	1
1	Swivel 1 1/2" BSP*	108315	1	1	1
2	Gasket	7-17-042	1	1	1
3	Swivel Adapter	116427	1	1	1
4	Pattern Sleeve Ring	120705	1	1	1
5	Socket Head Screw	7-67-088	1	1	1
6	O-Ring	7-57-311	1	1	1
7	Indicator Band	7-04-824	1	1	1
8	Locking Balls	**	42	42	42
9	Socket Head Screw	7-65-040	1	1	1
10	Socket Head Screw	7-65-002	1	1	1
11	Nozzle Body	120708	1	-	-
11	Nozzle Body	120709	-	1	-
11	Nozzle Body	120710	-	-	1
12	O-Ring	7-57-048	1	1	1
13	Spider	7-69-594	1	1	1
14	Spider Retainer	116363	1	1	1
15	Hex Nut	7-35-017	1	1	1
16	Lower Cam Roller	7-58-210	1	1	1
17	Cam Axle	7-07-252	1	1	1
18	Upper Cam Roller	7-58-211	1	1	1
19	O-Ring	7-57-344	1	1	1
20	Detent Spring	7-69-111	1	1	1
21	Ball	7-04-018	1	1	1
22	Discharge Key	7-27-034	1	1	1
23	Gallonge Control Ring	7-58-271	1	1	1
24	Gallonge control Band	7-03-632	1	-	-
24	Gallonge Control Band	7-04-838	-	1	-
24	Gallonge control Band	7-04-633	-	-	1
25	Ball	7-04-585	2	2	2
26	Socket Head Screw	7-67-094	2	2	2
27	Baffle Stem	116422	1	1	1
28	Turbine Retainer	109437	1	1	1
29	O-Ring	7-57-242	1	1	1
30	Spring	7-68-293	2	2	2
31	Cam Insert	7-23-023	1	1	1
32	Discharge Tube	117415	1	-	-
32	Discharge Tube	118760	-	1	-
32	Discharge Tube	118698	-	-	1
33	Pattern Indicator Band	7-03-664	1	-	-
33	Pattern Indicator Band	7-03-667	-	1	1
34	Pattern Sleeve	120707	1	1	1
35	Bumper	7-04-916	1	1	1
36	Turbine	7-72-024	1	1	1
37	Socket Head Screw	7-65-179	1	1	1
38	Baffle Head	116362	1	1	1

\* For other threads order by description and thread size (ODM & TPI) or by Akron Thread Code

\*\* Packet of 50 Locking Balls P/N 109042