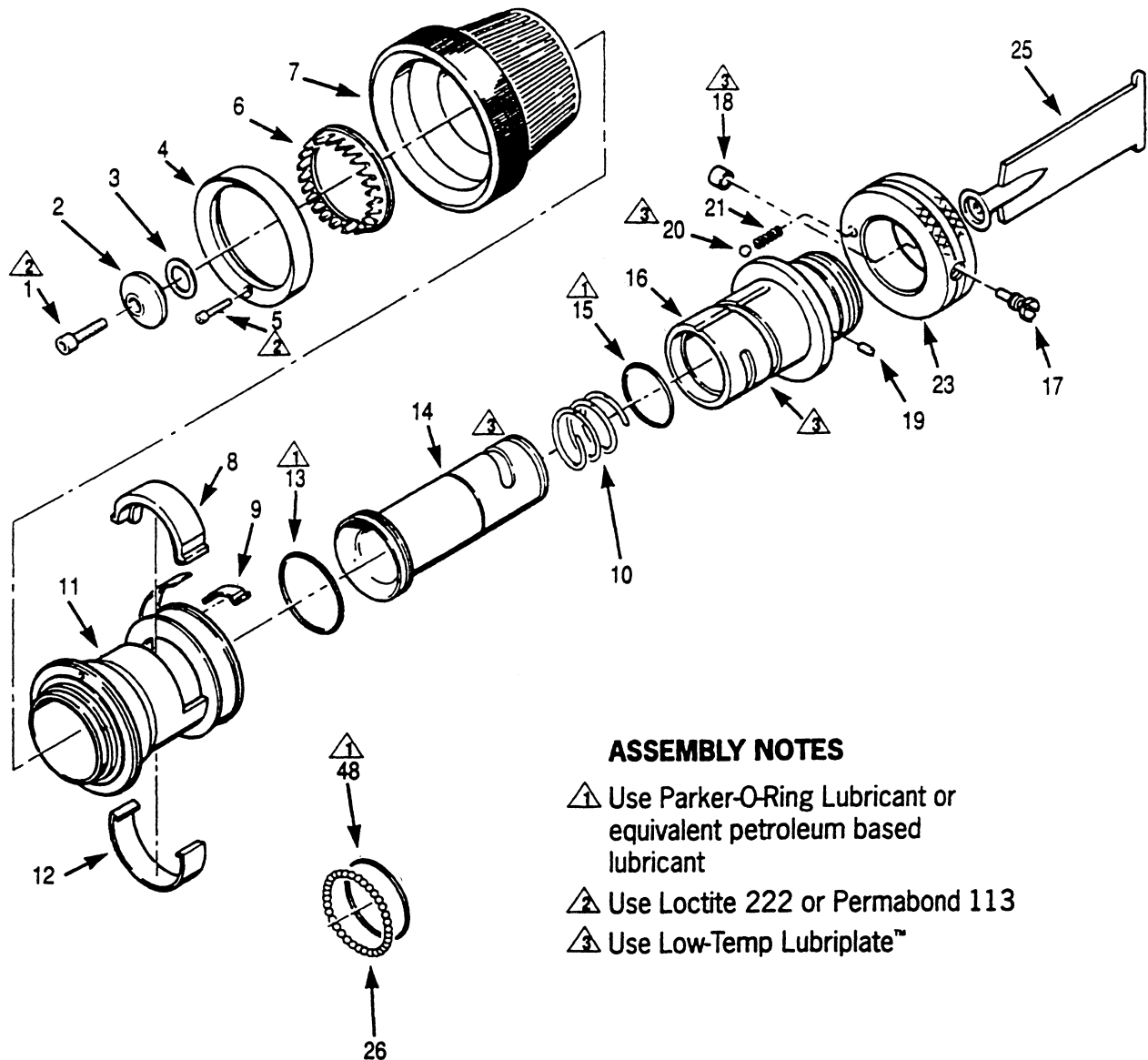


TECHNICAL SERVICE PARTS LIST



ASSEMBLY NOTES

- ⚠ Use Parker-O-Ring Lubricant or equivalent petroleum based lubricant
- ⚠ Use Loctite 222 or Permabond 113
- ⚠ Use Low-Temp Lubriplate™

TECHNICAL SERVICE PARTS LIST

ITEM NO.	DESCRIPTION	PART NUMBER	QUANTITY 3721
1	Socket Head Cap Screw	7-67-029	1
2	Baffle Head	102341	1
3	Gal. Adj. Shim 7-68-095 thru 098	AS REQUIRED	
4	Turbine Retaining Ring	104682	1
5	Socket Head Cap Screw	7-67-019	2
6	Turbine Teeth (Note: Do Not Cut)	7-72-136	1
7	Bumper	7-03-019	1
8	Thread Insert	104907	1
9	Sleeve Detent Spring	7-69-163	1
10	Spring	7-69-317	1
11	Pattern Sleeve	104697	1
12	Retaining Band	7-04-032	1
13	O-Ring	7-57-244	1
14	Discharge Tube	120342	1
15	O-Ring	7-57-245	1
16	Nozzle Body	120340	1
17	Cam Nut	7-35-046	1
18	Cam Roller	7-58-175	1
19	Key Pin	7-27-018	1
20	Detent Ball	7-04-018	1
21	Detent Spring	7-69-111	1
23	Discharge Control Ring LPM	120341	1
25	Blade	106125	1
26	Locking Balls	**	32
48	O-Ring	7-57-185	1