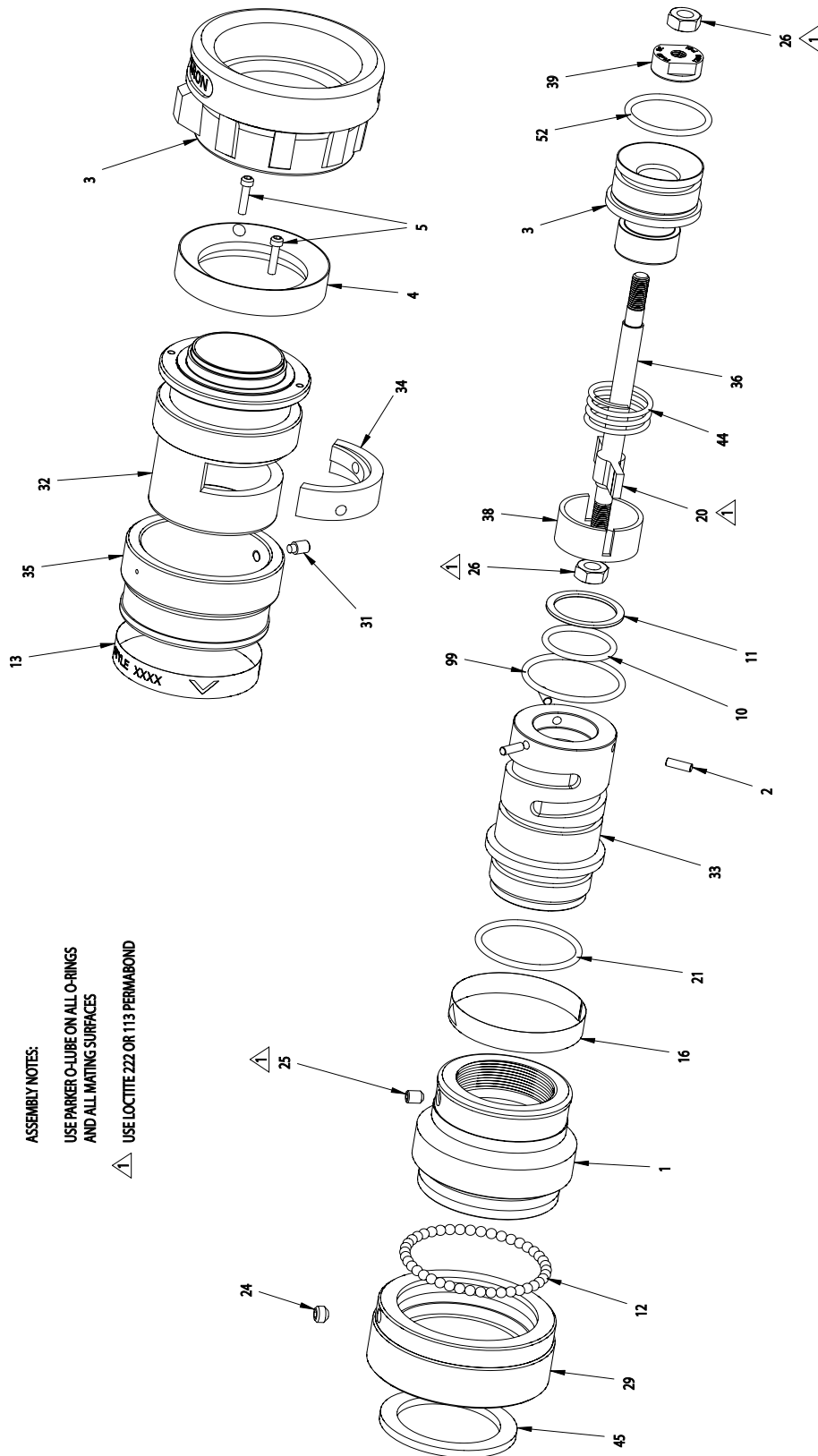


TECHNICAL SERVICE PARTS



ASSEMBLY NOTES:
USE PARKER O-LUBE ON ALL O-RINGS
AND ALL MATING SURFACES
USE LOCTITE 222 OR 113 PERMABOND

ITEM NO.	DESCRIPTION	PART NUMBER	QUANTITY
1	Swivel Adapter	120422	1
2	Throat Pin	7-45-158	3
3	Throat	109435	1
4	Turbine Retainer	109437	1
5	Socket Head Screw	7-60-041	2
10	O-Ring	7-57-330	1
11	Back Up Ring	7-58-276	1
12	Ball Bearings	*	42
13	ID Band	7-03-652	1
16	Indicator Band	7-04-851	1
20	Spider	7-69-594	1
21	O-Ring	7-57-048	1
24	Allen Head Screw	7-65-008	1
25	Allen Head Screw	7-65-025	1
26	Hex Nut	7-34-061	2
29	Swivel-1 1/2" NH**	108313	1
31	Socket Head Screw	7-67-088	1
32	Pattern Sleeve	120214	1
33	Nozzle Body	121075	1
34	Cam Insert	7-23-023	1
35	Pattern Sleeve Ring	120215	1
36	Baffle Stem	7-70-318	1
37	Bumper	7-03-724	1
38	Spider Retainer	116363	1
39	Baffle Head	121072	1
44	Spring	7-69-217	1
45	Gasket	7-17-042	1
52	O-Ring	7-57-331	1
99	O-Ring	7-57-281	1

* Packet of 50 Ball Bearings P/N 120870

** For other threads order by description and thread size (ODM & TPI) or by Akron Thread Code