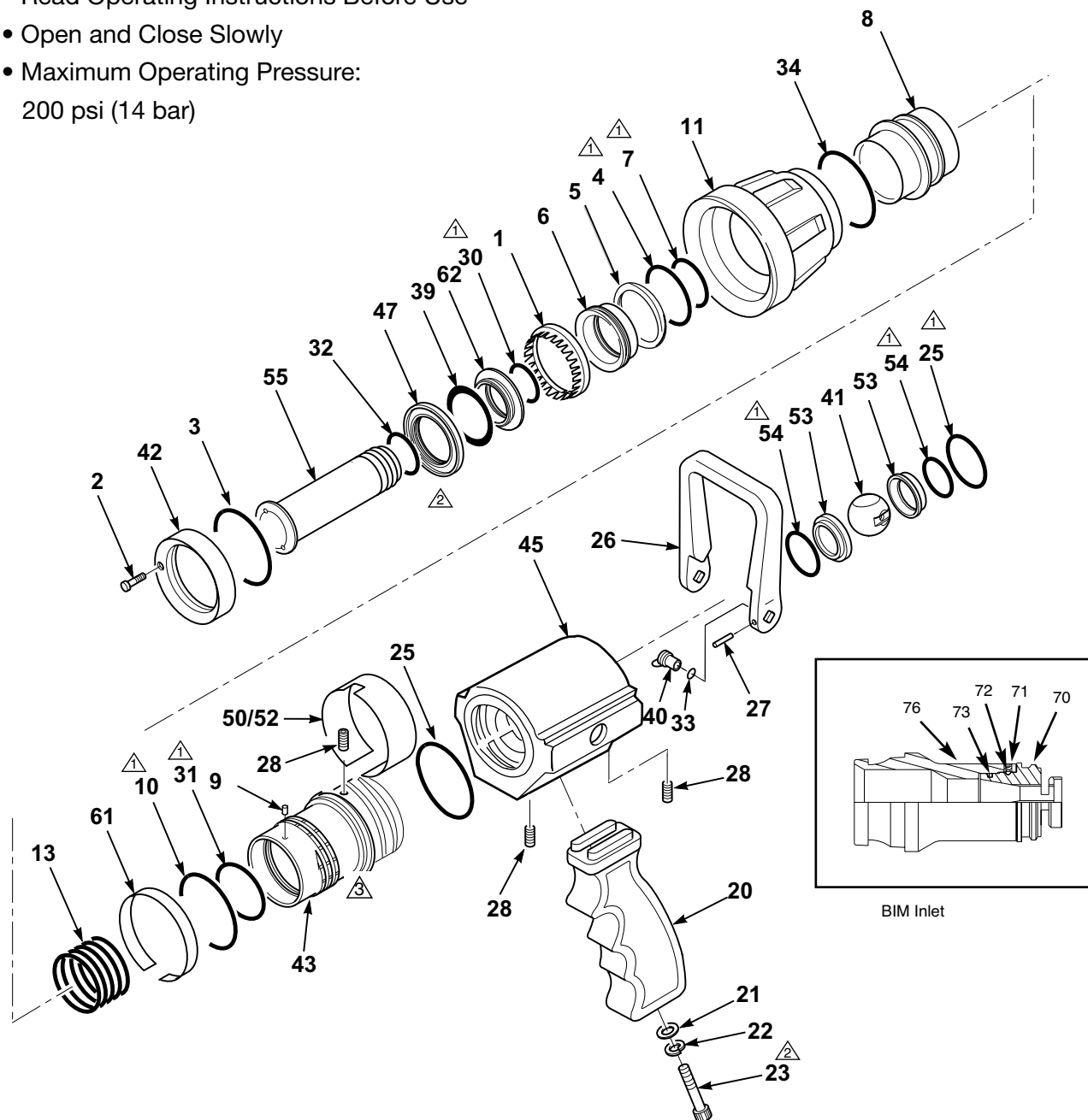


TECHNICAL SERVICE PARTS LIST

OPERATING NOTES:

- Read Operating Instructions Before Use
- Open and Close Slowly
- Maximum Operating Pressure:
200 psi (14 bar)



ASSEMBLY NOTES:

- △ Use Parker O-Ring Lubricant or equivalent petroleum based lubricant
- △ Use Loctite 222 or Permabond LM 113
- △ Use Low-Temp Lubriplate

ITEM NO.	DESCRIPTION	PART NUMBER	QUANTITY
			1520
1*	Turbine Teeth	772153	1
2	Socket Head Cap Screw	767094	2
3	O-Ring	757309	1
4	O-Ring	757268	1
5	Retaining Ring	756106	1
6	Throat Sleeve	107944	1
7	O-Ring	757048	1
8	Throat	120127	1
9	Socket Head Set Screw	767088	3
10	O-Ring	757308	1
11†	Bumper Assembly	15200011	1
13	Spring	769629	1
20	Pistol Grip	718233	1
21	Flat Washer	784093	1
22	Lock Washer	784090	1
23	Socket Head Cap Screw	763064	1
25*	O-Ring	757265	2
26	Handle	721427	1
27*	Roll Pin	744062	2
28	Socket Head Set Screw	766015	2
30	O-Ring	757052	1
31	O-Ring	757105	1
32	O-Ring	757042	1
33*	O-Ring	757269	2
34	O-Ring	757323	1
39	Baffle Gasket	714214	1
40	Trunnion	118527	2
41*	Ball	703567	1
42	Turbine Retaining Ring	120128	1
43	Nozzle Body	120129	1
45	Pistol Grip Shutoff Body	120131	1
47	Gasket Retainer	120125	1
50	Nozzle Body Band	703599	1
52	Fog Band	703600	1
53*	Seat	769245	2
54*	O-Ring	757281	2
55	5/8" Tip	120126	1
61	1520 Pattern Indicator Band	703590	1
62	Baffle Head	118521	1
70	Swivel Adapter	118605	1
71	Socket Head Set Screw	7-65-008	1
72	Ball Bearings	7-04-030	38
73	O-Ring	7-57-256	1
76	BIM Adapter	120132	1
Not Shown	Smooth Bore Label	704732	1

* Parts included in Field Service Kit # 9183

† A new pattern band item #61 is required