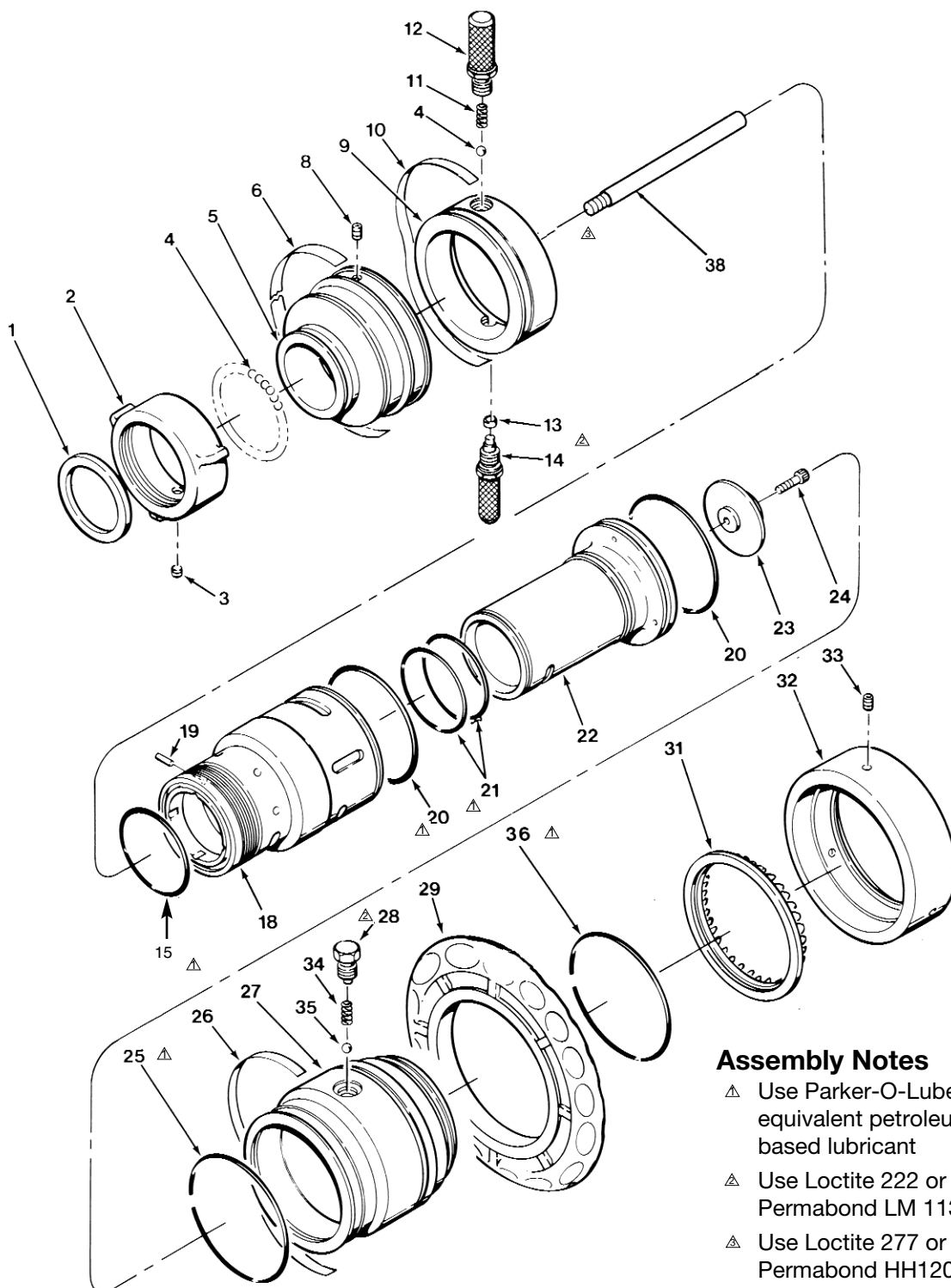


TECHNICAL SERVICE PARTS LIST



Assembly Notes

- ▲ Use Parker-O-Lube or equivalent petroleum based lubricant
- ▲ Use Loctite 222 or Permabond LM 113
- ▲ Use Loctite 277 or Permabond HH120

*Nozzles with a Blade & Roll Pin must be returned to the factory for upgrade

ITEM NO.	DESCRIPTION	PART NUMBER	QUANTITY
1	Swivel Gasket	7-17-043	1
2	Swivel - 2-1/2 NH*	101420	1
3	Swivel Plug	7-42-023	1
4	Ball Bearings	**	40
5	Swivel Adapter	102324	1
6	I.D. Band	7-03-352	1
7	Item # not used		
8	Set Screw	7-65-084	1
9	Discharge Control Ring	102330	1
10	Discharge Control Band (GPM)	7-03-353	1
10	Discharge Control Band (LPM)	7-03-354	1
11	Spring	7-68-026	1
12	Handle	102328	1
13	Cam Roller	7-58-160	1
14	Cam Handle	102329	1
15	O-Ring	7-57-046	1
16	Item # Not Used		
17	Item # Not Used		
18	Nozzle Body w/Built-in Spider	117464	1
19	Key	7-27-027	1
20	O-Ring	7-57-251	2
21	O-Ring	7-57-249	2
22	Discharge Tube	102335	1
23	Baffle	102326	1
24	Socket Head Cap Screw	7-67-139	1
25	Split O-Ring	7-57-252	1
26	Pattern Indicator Band	7-03-469	1
27	Pattern Sleeve	***	1
28	Cam Nut	7-35-045	1
29	Pattern Control Ring	***	1
30	Item # not used		
31	Turbine Teeth (cut)	7-73-062	1
32	Turbine Retaining Ring	102331	1
33	Set Screw	7-67-088	3
34	Spring	7-69-111	1
35	Ball Bearing	7-04-018	1
36	O-Ring	7-57-102	1
37	Item # Not Used		
38	Stem	117463	1

*For other threads order by description and thread size (ODM and TPI) or by Akron Thread Code.

**Packet of 50 Ball Bearings - P/N 109041.

***The pattern control ring, Item 29, must be pressed on at the factory.

OPERATING & MAINTENANCE INSTRUCTIONS

The four flow settings are based on 100 psi inlet pressure. Maximum operating pressure of 150 psi. Check the turbine teeth to be sure they turn freely before operating.

The turbine teeth are split to allow for expansion and contraction.

The turbine teeth are easily removed for cleaning or replacement. Simply remove the three set screws (33), remove the turbine retaining ring (32), and remove the turbine teeth (31). To clean, simply wipe off any dirt and grease from the turbine teeth and the contact surfaces on the turbine retaining ring and pattern sleeve (27). If other parts of the nozzle are disassembled, be sure that any O-Rings are lubricated with Low-Temp Lubriplate® or equivalent before reassembly.