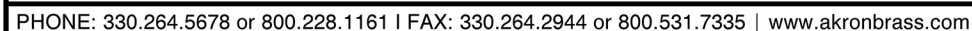


ASSEMBLY NOTES:  
USE PARKER O-LUBE ON ALL O-RINGS AND  
MATING SURFACES UNLESS OTHERWISE NOTED.

- 1 USE PERMABOND LM113 OR LOCTITE 222.
- 2 USE LOW-TEMP LUBRIPLATE.
- 3 DO NOT CUT TURBINE TEETH.
- 4 USE PERMABOND 737.
- 5 DIMPLE AT ASSEMBLY.



**WARRANTY AND DISCLAIMER\*:** We warrant Akron Brass products for a period of five (5) years\* after purchase against defects in materials or workmanship. Akron Brass will repair or replace product which fails to satisfy this warranty. Repair or replacement shall be at the discretion of Akron Brass. Products must be promptly returned to Akron Brass for warranty service. We will not be responsible for: wear and tear; any improper installation, use, maintenance or storage; negligence of the owner or user; repair or modification after delivery; failure to follow our instructions or recommendations; or anything else beyond our control. **WE MAKE NO WARRANTIES, EXPRESS OR IMPLIED, OTHER THAN THOSE INCLUDED IN THIS WARRANTY STATEMENT, AND WE DISCLAIM ANY IMPLIED WARRANTY OF MERCHANTABILITY OR FITNESS FOR ANY PARTICULAR PURPOSE.** Further, we will not be responsible for any consequential, incidental or indirect damages (including, but not limited to, any loss of profits) from any cause whatsoever. No person has authority to change this warranty. \*Unless otherwise provided herein. Akron Brass industrial electronic components & the Severe-Duty Monitor have a one (1) year warranty. Select Akron Brass headline nozzles and valves carry a ten (10) year warranty. Weldon products have a two (2) year warranty from date of manufacture (excluding consumable components). Select Weldon LED products carry a five (5) year warranty. Honda products have the manufacturers' warranty and Akron Brass disclaims any warranty in respect of those products.

©Premier Farnell Corporation. 2012 All rights reserved. No portion of this can be reproduced without the express written consent of Premier Farnell Corporation

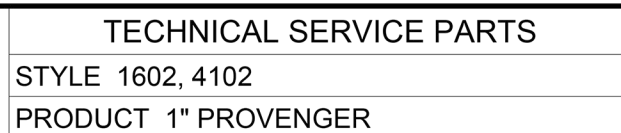
**Parts List Sheet:**

124632

D47406



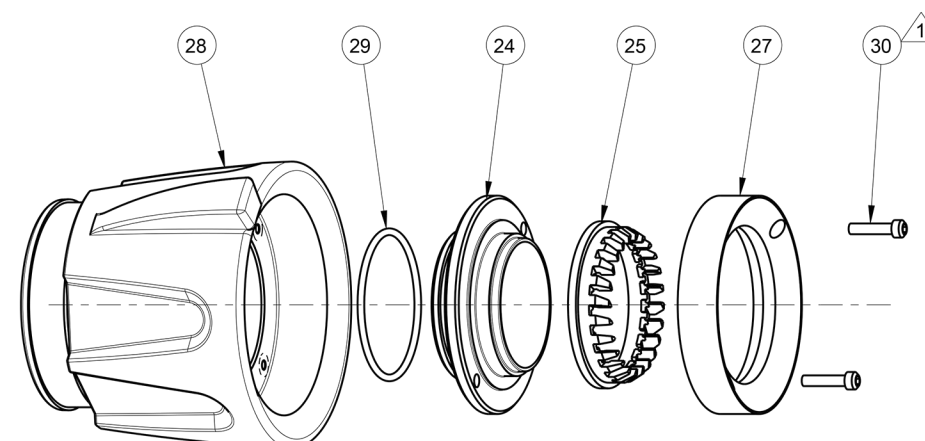
# QUALITY AND INNOVATIVE FIRE AND RESCUE EQUIPMENT



# QUALITY AND INNOVATIVE FIRE AND RESCUE EQUIPMENT



- ① USE PERMABOND LM113 OR LOCTITE 222.
- ② USE LOW-TEMP LUBRIPLATE.
- ③ DO NOT CUT TURBINE TEETH.
- ④ USE PERMABOND 737.
- ⑤ DIMPLE AT ASSEMBLY.



D47406



Find		Description	Item	QTY
1		SHUTOFF S/A	16020002	1
2		PATTERN SLEEVE S/A	16020001	1
31	##, +	SWIVEL 1.0" NH	124761	1
32		RING VOLUME CONTROL	758340	1
33		AXLE CAM	707252	1
34		ROLLER CAM LOWER	758210	1
35		ROLLER CAM UPPER	758211	1
37		RETAINER RING	758334	1
38		O-RING 2-126	757311	1
39		O-RING 2-025	757242	1
40		O-RING 2-021	757344	1
41		HEAD BAFFLE (100PSI)	121391	1
41		HEAD BAFFLE (75PSI)	121144	1
41		HEAD BAFFLE (87PSI)	121143	1
42		TUBE DISCHARGE (87PSI - 12, 23, 34, 53GPM)	124712	1
42		TUBE DISCHARGE (75PSI - 5, 10, 20, 40GPM)	124711	1
42		TUBE DISCHARGE (100PSI, 6-40bar - 5, 10, 20, 40GPM)	124709	1
43		KEY DISCHARGE	727034	1
44		SCREW CAM	765302	1
45		CAM SPACER	770416	1
46		INSERT CAM GROOVE (1602)	723068	1
46		INSERT CAM GROOVE (4102)	723069	1
47		BAND PATTERN INDICATOR (STYLE 1602)	803133	1
47		BAND PATTERN INDICATOR (STYLE 4102)	803134	1
48		BAND GALLONAGE CONTROL (LPM 45, 85,130,200)	803139	1
48		BAND GALLONAGE CONTROL (LPM 19,40,75,130)	803140	1
48		BAND GALLONAGE CONTROL (GPM 5,10,15,30)	803141	1
48		BAND - FLUSH	803136	1
49		BALL 3/16"	704018	1
50		SPRING DETENT	769111	1
51		SCREW SOCKET HEAD CAP 6-32 x 1/2"	765150	1
52	#, +	GASKET	717047	1
53	+	RING PISTON	756001	1

Find		Description	Item	QTY
59		SCREW CAM (CE VERSION)	765343	1
60		SPRING (CE VERSION)	768448	1
61		BALL 3/16" (CE VERSION)	704018	1
62		LABEL (CE VERSION) 1602	729510	1
62		LABEL (CE VERSION) 4102	729511	1
64		RING RETAINING (OPTIONAL)	122841	1
65		TURBINE TEETH METAL (OPTIONAL)	772265	1
66		BEARING TURBINE (OPTIONAL)	703946	1
70	**	SHIM BAFFLE PLASTIC BLUE	-	AS REQD.
71	**	SHIM BAFFLE PLASTIC BROWN	-	AS REQD.
72	**	SHIM BAFFLE PLASTIC PINK	-	AS REQD.
73	**	SHIM BAFFLE PLASTIC GREEN	-	AS REQD.
74	**	SHIM BAFFLE PLASTIC TAN	-	AS REQD.
75	**	SPACER STAINLESS STEEL .021" GREEN	-	AS REQD.
76	**	SPACER STAINLESS STEEL .047" BLACK	-	AS REQD.

\*\* INSTALLED AT FACTORY AS NEEDED FOR FINAL FLOW CALIBRATION  
# PARTS INCLUDED IN FIELD SERVICE KIT: 91800001  
## FOR OTHER THREADS ORDER BY DESCRIPTION AND THREAD SIZE.

+ ITEMS 5,19,31,52,53 INCLUDED IN SWIVEL SUB ASSEMBLY:  
1" NH: 48010006  
1" BSP: 48010007  
1" NPSH: 48012002

PHONE: 330.264.5678 or 800.228.1161 | FAX: 330.264.2944 or 800.531.7335 | [www.akronbrass.com](http://www.akronbrass.com)

WARRANTY AND DISCLAIMER\*: We warrant Akron Brass products for a period of five (5) years\* after purchase against defects in materials or workmanship. Akron Brass will repair or replace product which fails to satisfy this warranty. Repair or replacement shall be at the discretion of Akron Brass. Products must be promptly returned to Akron Brass for warranty service. We will not be responsible for: wear and tear; any improper installation, use, maintenance or storage; negligence of the owner or user; repair or modification after delivery; failure to follow our instructions or recommendations; or anything else beyond our control. WE MAKE NO WARRANTIES, EXPRESS OR IMPLIED, OTHER THAN THOSE INCLUDED IN THIS WARRANTY STATEMENT, AND WE DISCLAIM ANY IMPLIED WARRANTY OF MERCHANTABILITY OR FITNESS FOR ANY PARTICULAR PURPOSE. Further, we will not be responsible for any consequential, incidental or indirect damages (including, but not limited to, any loss of profits) from any cause whatsoever. No person has authority to change this warranty. \*Unless otherwise provided herein. Akron Brass industrial electronic components & the Severe-Duty Monitor have a one (1) year warranty. Select Akron Brass headline nozzles and valves carry a ten (10) year warranty. Weldon products have a two (2) year warranty from date of manufacture (excluding consumable components). Select Weldon LED products carry a five (5) year warranty. Honda products have the manufacturers' warranty and Akron Brass disclaims any warranty in respect of those products.  
\*Premier Farnell Corporation. 2012 All rights reserved. No portion of this can be reproduced without the express written consent of Premier Farnell Corporation

Parts List Sheet:

124632

D47406





SHUTOFF SUB-ASSEMBLY

16020002

Find		Description	Item	QTY
1		SHUTOFF BODY	124706	1
2		SEAT SPACER	770417	1
3	#	BALL 1"	704490	1
4		TRUNNION	109440	2
5	+	ADAPTER SWIVEL	702215	1
5	+	ADAPTER JIM/BIM	117432	1
6		SPRING	768272	1
7	#	SEAT NOZZLE	769245	2
8		HANDLE SHUTOFF BLACK (RAISED LETTERS)	721417	1
9		SPACER PISTOL GRIP	770415	1
10		GRIP PISTOL BLACK	718233	1
11		WASHER FLAT 5/16	784093	2
13		SCREW SOCKET HEAD CAP 5/16-18 x 2 1/4"	763064	1
14		SCREW ALLEN HEAD SET 1/4-20 x 3/16"	765008	1
15	#	O-RING 2-125	757281	1
16		O-RING 2-225	757375	1
17	#	O-RING 2-012	757282	2
18	#	PIN ROLL 1/8 x 1 1/8"	744080	2
19	+	O-RING 2-217 (SWIVEL)	757328	1
19	+	O-RING 2-217 (JIM/BIM)	757256	1
20		SPIDER/STEM S/A	125218	1
21		BAND ID	803035	1
22		LABEL OPEN/CLOSE	729803	1
23		SHIM	769351	4

PATTERN SLEEVE SUB-ASSEMBLY

16020001

Find		Description	Item	QTY
24		RING PATTERN SLEEVE	124707	1
25	#	TURBINE TEETH	772024	1
27		TURBINE RETAINER	756207	1
28		BUMPER, PATTERN SLEEVE	803138	1
29		O-RING 2-028	757066	1
30		SCREW SOCKET HEAD CAP 4-40 x 1/2"	760041	2

\*\* INSTALLED AT FACTORY AS NEEDED FOR FINAL FLOW CALIBRATION  
# PARTS INCLUDED IN FIELD SERVICE KIT: 91800001  
## FOR OTHER THREADS ORDER BY DESCRIPTION AND THREAD SIZE.

+ ITEMS 5,19,31,52,53 INCLUDED IN SWIVEL SUB ASSEMBLY:  
1" NH: 48010006  
1" BSP: 48010007  
1" NPSH: 48012002

Parts List Sheet:

124632

