

Item Description: Glass and Sharps Protection – Glass Management Kit

The Glass Management Kit is used by rescue personnel to protect both patients and rescuer from glass or sharp objects during casualty extrication.

The bag is made from high grade PVC tarpaulin canvas with extra heavy duty YKK zips.

All components are made from quality materials to ensure “whole of life”

The contents are neatly positioned in easy reach, once the bag is opened and laid flat.



• Tough, UV stable material	• Easy access to all contents
• Washable	• Essential items for managing glass safety

Information:

Dimensions: L x H x W cm	L 105 x W 54 x H 9
Weight: Kg	13kg
Warranty:	5 years on bag and zip
Standards/Approvals:	
Manufacturer:	BRT Fire and Rescue Supplies
Country of Origin:	Australia

*Operational /Service life expectation	
	10 years

* Operational/Service life Expectation is an estimation of the whole of life period of each product when installed, maintained and serviced according to the manufacturers recommendation or their warranty conditions. This information is provided as an indicative guide only and in no way implies or suggests an extended warranty or any responsibility of the manufacturer or BRT Fire and Rescue Supplies beyond the nominated warranty period.



User Instructions and Operation:**Introduction:**

The Big Red Truck Glass Management Kit is a comprehensive all in one kit developed for the safe removal of windscreen glass and maintaining protection for rescue personnel and casualties at motor vehicle accidents.

The kit contains all necessary items to protect against injury caused by glass, sharp objects and accidental injury such as when cutting with hydraulic rescue tools or where ever sharp dangerous metals or glass may be present.



Each Glass Management Kit (GMK) contains the following items:

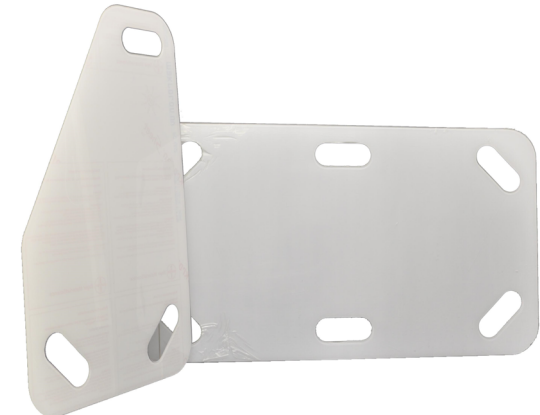
- 2 x Polycarbonate Hard Protection (1 x Small, 1 x Large)
- 1 x 2m PVC Soft Protection Roll
- 2 x 6mm PVC Flex Board (1 x Small, 1 x Large)
- 2 x PVC windscreen Clamps
- 1 x Opaque heavy duty PVC Windscreen shield
- 6 x Disposable Protection Sheets
- 1 x Windscreen Removal Tool
- 1 x windscreen center punch
- 2 x Cans GMK glass cutting lubricant foam
- 1 x Hand operated laminated glass saver saw
- 1 x Flexible glass containment net
- 1 x Windscreen Hammer
- 1 x Heavy Duty reinforced black vinyl carry case (Other colours maybe be available on request)
- 1 x Glass management kit contents List



Item 1**Polycarbonate Hard Protection**

Polycarbonate hard protection is used to create a safe shield to protect patient and emergency service personnel to prevent injury

They are used in rescue situations by placing the hard protection between a patient and sharp objects such as glass, jagged metal on when a hydraulic rescue tool is being used in close proximity. Hard protection is manufactured using clear polycarbonate for strength and to allow full visibility for the rescuer.

Item 2**PVC Soft Protection Roll**

The soft protection roll is used to cover a patient and protect from glass dust or debris contaminating to an open wound or causing further injury.

Item 3**PVC Flexible Hard Protection**

This is used in the same manner as the polycarbonate hard protection except that it can be bent or wrapped around a patient or object.

Item 4**PVC Clamps**

The PVC clamps can be used in two ways.

- To secure the windscreen roll from each side of the windscreen
- As hard protection around cut metal edges such as a door sill or a pillar that has been cut by a rescue tool.



Item 5

Opaque heavy duty PVC Windscreen shield

The windscreen shield can be used both on the inside and outside of the vehicle depending on circumstances.

Inside: To protect the patient from broken windscreen glass or glass dust created when using a windscreen saw.

Outside: To create shade from the sun or a cover from rain. over the patient

Item 6

Disposable Protection Sheets

Disposable Protection sheets are also used to cover and protect a patient from glass or debris contamination when cutting glass.

Item 7

Windscreen Removal Tool

Unlike modern vehicles that have windscreens glued onto position older vehicles may have windows that are held in place by rubber seals.

A windscreen removal tool is used by pulling the sharp blade between the rubber and glass around the edge of the windscreen.

Item 8

Spring activated windscreen center punch

Spring activated center punch is used to break non-laminated glass. to gain fast access to a vehicle.

Where ever possible ensure that the proper glass protection are held in place to catch debris. Place the center punch near the edge of the window and pull and release the keyring fob.

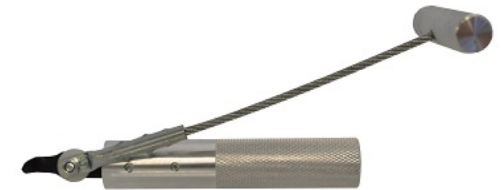
Item 9

GMK glass cutting lubricant foam

Foam should be used whenever cutting glass using a manual or reciprocating saw.

Foam serves three purposes when cutting windscreens

- 1 To mark the intended path of the cutting saw.
- 2 To capture fine glass dust particles
- 3 To lubricate the blade



Item 10

Hand operated laminated glass saver saw

A windshield cutter is the most effective tool to cut laminated windshields in a motor vehicle incident. The Saw consists of a handle, folding hardened blade and a point that can also be used as a window punch. The blade folds away to protect the blade and the user for safety. The 10TPI blade face outward is designed specifically to cut and rake the glass in a manner that reduces the size of glass shards and splintering.

Use

The saw blade folds out for use of operation and folds in for safe storage. The saw consists of a hand grip, a solid point glass breaker and bumper points on each end to act as a stopper that prevent follow through of the tool when in use.

Construction

Blades are 10TPI and are made from steam tempered high speed steel for toughness, hardness and durability.

The body is made from thick walled and solid steel tube. The grip handles are laser cut for precision and accuracy and ensures excellent tactile characteristics and balance when using the saw.

The body has a high quality yellow powder coated finish. The end is capped with a PVC rubber cap

(Continued over page)



Operation

Warning!

The saw is to be used only once appropriate glass management procedures have been carried out to protect the operator and patient from potential glass debris.

- Determine a line where the windscreen cut is to be made.

Hint: Shaving foam provides a effective method of marking the line, lubricating the blade and containing the finest glass shards.

- Position the Saver Saw point on the windshield ready to strike downwards at the start of the cut line. The cut line should start at the furthest point of the line away from the user.
- Strike the point against the glass to create an entry hole large enough for the blade to be inserted.
- Insert the blade into the entry hole.
- Using a push then pull the sawing motion, cut along the line. The blade is designed to cut on each push and rake the glass on each pull.
- When cut is complete remove the saver saw and wipe blade clean, then fold and stow blade.

Testing and Maintenance.

Wipe and clean and use. Lubricate Blade to prevent corrosion.

Check blades after use to ensure it is straight and that there are no missing teeth.

Replace if damaged as required



Item 10

Flexible glass containment net

A glass net is used to capture glass and debris when breaking a window.

The net is placed in position below the window before breaking it.

The flexible sides allow the net to be pushed onto and form a seal along most hard surfaces

After the window is broken the glass falls into the net and can be taken away from the vehicle and disposed in a safe area.

**Item 11**

Windscreen Life Hammer

The windscreen hammer like the automatic center punch is used to break a window.

The hammer also features a seat belt cutter in the end of the handle.



Note: The windscreen hammer should always be used in conjunction with a glass net and adequate protective covers to prevent injury.

Testing and Maintenance:

- Clean all items thoroughly and replace in stowage bag.
- Check contents list for missing items
- Inspect for damage
- Replace any missing contents by contacting the manufacturer or manufacturers authorized agent

Safety:

Always use appropriate PPE when using the BRT Glass Management Kit



NOTES

