



Instruction Manual

FDL-300R-K01

THANK YOU FOR SELECTING THE NIGHTSTICK FDL-300R-K01
TACTICAL FIRE LIGHT W/ MULTI-ANGLE HELMET MOUNT!

PLEASE SAVE THESE INSTRUCTIONS

Please read these instructions before using your Nightstick FDL-300R-K01 Tactical Fire Light w/ Multi-Angle Helmet Mount. They include important assembly and operating instructions.



PACKAGE CONTENTS

- 1 – FDL-300R Tactical Fire Light
- 1 – NS-HMC1 Multi-Angle Helmet Mount
- 2 – CR-123 Lithium Batteries
- 1 – 5/16" - 18 x 1/4" Light Mounting Allen Set Screw (installed in mount)
- 2 – 5/16" - 18 x 1/4" Brim Mounting Allen Set Screws (installed in mount) – for Fire Helmets
- 2 – 5/16" - 18 x 3/8" Brim Mounting Allen Set Screws (loose) – for Hard Hats
- 1 – 5/32" Allen Wrench

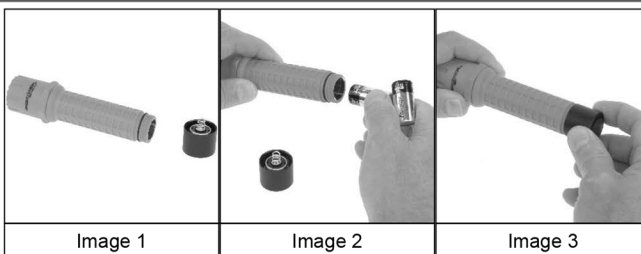
APPLICATION

The FDL-300R-K01 Tactical Fire Light w/ Multi-Angle Helmet Mount is a complete system for attaching the Tactical Fire Light to any Fire Helmet or Hard Hat.

The Tactical Fire Light is rated at 180 Lumens and has a tight long-throw beam that is distance rated at 190 meters. The light is IP-X7 waterproof and is drop rated at 2 meters.

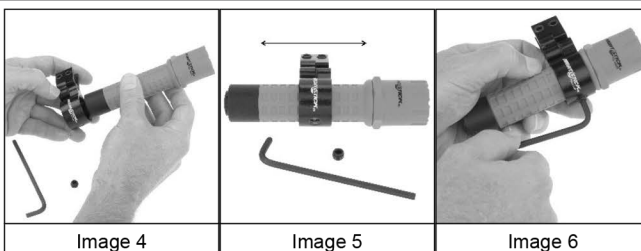
The Multi-Angle Helmet Mount can be attached to either side of virtually any Fire Helmet or Hard Hat and provides 140 degrees of adjustability. This adjustability allows the user to best position the light for purposes of providing clearance around face shields, goggles or other potential obstructions.

INSTALLING BATTERIES INTO THE TACTICAL FIRE LIGHT



- To install the included CR-123 Lithium Batteries in the Tactical Fire Light, begin by unscrewing and removing the tail-cap switch. (Image 1)
- Insert both batteries into the handle of the light with the positive terminal ends being inserted first. (Image 2)
- Re-install the tail-cap switch, being careful not to cross-thread the tail-cap. (Image 3)
- Tighten the tail-cap switch completely and then test the operation of the light (see **OPERATION** below).

INSTALLING THE LIGHT INTO THE MULTI-ANGLE MOUNT



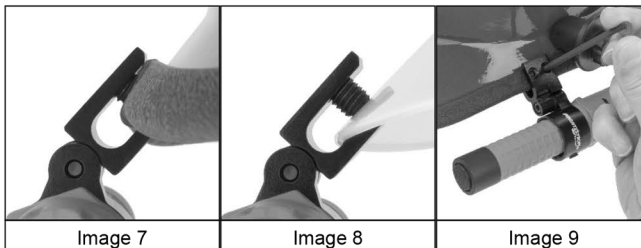
Begin by deciding which side of the helmet the FDL-300R-K01 Tactical Fire Light w/ Multi-Angle Helmet Mount is to be attached. This will determine the proper orientation of the light in the mount. Additionally check that the final location on the helmet does not interfere with the normal operation of face shields, goggles, etc.

- Remove the 5/16" - 18 x 1/4" Light Mounting Allen Set Screw from the Multi-Angle Helmet Mount and slip the Tactical Fire Light into the mount. (Image 4)
- NOTE: The Multi-Angle Helmet Mount may be positioned anywhere along the length of the Tactical Fire Light. (Image 5)
- Once the light is in the proper position, re-install the Light Mounting Allen Set Screw and tighten, securing the Tactical Fire Light in place. (Image 6)

CAUTION: Be careful when tightening the Allen Set Screw. Do not over-tighten. Doing so may damage the handle of the light. The Allen Set Screw should only be tightened enough to prevent the light from coming loose. Over time this screw may come loose. Periodically check and re-tighten as needed.

SUGGESTION: Application of a thread locking solution (such as Loctite® Threadlocker Blue) may be applied to secure the Allen Set Screw. Do not use the "red" version of this product as it is designed for a more permanent installation and would make it difficult to remove the Allen Set Screw in the future.

INSTALLING THE FDL-300R-K01 ON TO THE HELMET



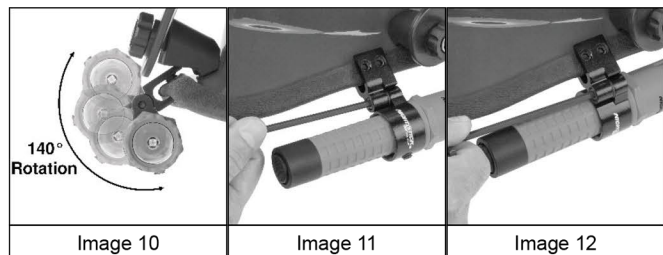
Once the Tactical Fire Light has been installed into the Multi-Angle Helmet Mount, the entire unit is ready to be attached to the Fire Helmet or Hard Hat. The Multi-Angle Mount comes with two 5/16" - 18 x 1/4" Brim Mounting Allen Set Screws pre-installed. These two Allen Set Screws are designed to be used with the thicker brim found on most Fire Helmets. (Image 7) It may be necessary to switch these two Allen Set Screws with the 5/16" - 18 x 3/8" set if the thickness of the brim of the helmet or Hard Hat makes it impossible to use the shorter set. (Image 8)

- Position the Multi-Angle Mount over the edge of the brim and tighten the appropriate set of Allen Set Screws using the included 5/32" Allen Wrench. (Image 9)

CAUTION: Be careful when tightening the Allen Set Screws. Do not over-tighten. Doing so may damage or crush the brim of the Fire Helmet or Hard Hat. These two Allen Set Screws should only be tightened enough to prevent the mount from coming loose from the helmet. Over time these screws may come loose. Periodically check and re-tighten as needed.

***SUGGESTION:** Application of a thread locking solution (such as Loctite® Threadlocker Blue) may be applied to secure these Allen Set Screws. Do not use the "red" version of this product as it is designed for a more permanent installation and would make it difficult to remove these Allen Set Screws in the future.*

SETTING THE ANGLE OF THE MULTI-ANGLE MOUNT



Once mounted to the helmet, the user can change the angle of the mount through 140 degrees of adjustment in order to position the light appropriately for the optimum clearance and illumination. (Image 10)

- To adjust the angle, simply loosen the Angle Lock Socket Head Cap Screw using the included 5/32" Allen Wrench. (Image 11)
- Select the angle and then tighten the Angle Lock Socket Head Cap Screw securely. (Image 12)
- Test to make sure that the angle will not change and continue tightening as needed.

OPERATION

The Tactical Fire Light has two light modes: **MOMENTARY** and **CONSTANT-ON**. The light has a single tail switch providing access to all modes.

MOMENTARY

- Lightly press the tail-cap switch for momentary operation. Release the switch to turn the light off.

CONSTANT-ON

- Press the tail-cap switch until it clicks and then release for constant-on mode. Press and release the switch again to turn the light off.

BAYCO PRODUCTS LIMITED LIFETIME WARRANTY

WARRANTY

Bayco Products, Inc. warrants this product to be free from defects in workmanship and materials for the original purchaser's lifetime. The Limited Lifetime Warranty includes the LEDs, housing and lenses. Rechargeable batteries, chargers, switches, electronics and included accessories are warranted for a period of two years with proof of purchase. Disposable, non-rechargeable batteries are excluded from this warranty. Normal wear and failures which are caused by accidents, misuse, abuse, faulty installation and lightning damage are also excluded.

In the event that Bayco Products, Inc. receives notice that any product does not conform to its warranty, the original purchaser's sole and exclusive

remedy, and Bayco Products, Inc.'s sole and exclusive liability, shall be for Bayco Products, Inc., at its sole option, to either repair or replace the non-conforming product in accordance with this limited warranty. The original purchaser shall follow the instructions below to qualify for a repair or replacement product. This is the only warranty, expressed or implied, including any warranty of merchantability or fitness for a particular purpose.

IN NO EVENT WILL BAYCO PRODUCTS, INC. OR ITS AFFILIATES OR SUPPLIERS BE LIABLE FOR ANY INDIRECT, SPECIAL, INCIDENTAL OR CONSEQUENTIAL DAMAGES OF ANY KIND REGARDLESS OF THE FORM OF ACTION, WHETHER IN CONTRACT, TORT (INCLUDING NEGLIGENCE), STRICT LIABILITY OR OTHERWISE. THE TOTAL CUMULATIVE LIABILITY TO CUSTOMER, FROM ALL CAUSES OF ACTION AND ALL THEORIES OF LIABILITY, WILL BE LIMITED TO AND WILL NOT EXCEED THE PURCHASE PRICE OF THE PRODUCT PAID BY CUSTOMER.

If this product is used for rental purposes, the warranty term is reduced to 90 days from the date of purchase.

WARRANTY CLAIMS – USA

Return the product to the place of purchase for all warranty related issues. If this is not possible, contact Bayco Customer Service at (800) 233-2155 M-F 8-5 Central Time for a Return Goods Authorization (RGA). Do not return this product to Bayco without first receiving an RGA Number from Bayco Customer Service. When returning the product, the RGA Number must be written on the outside of the shipping box.

WARRANTY CLAIMS – OUTSIDE OF USA

Return the product to the place where purchased for all warranty related issues.

EXTENT OF COVERED WARRANTY WORK

Bayco will repair or replace this product at our option. If it is determined that the warranty is no longer in effect, Bayco will contact you with a repair estimate before beginning any work.

WARRANTY QUESTIONS

If you have any questions about this warranty or any other Bayco product inquiries, please contact Bayco Customer Service at (800) 233-2155 M-F 8-5 Central Time.

RECORD YOUR WARRANTY INFORMATION

Please record your FDL-300R-K01 product information here for use with any warranty claim.

Date of Purchase _____

