

BRT Fire and Rescue Supplies – Product Data Sheet

Product ID: #SFKS4000-BP

Description: Knapsack Scotty 4000BP

Knapsacks are used for extinguishing wildfires (bush fire). The knapsack is designed to be worn on the users back and incorporates a manual hand pump and nozzle.

The Scotty 4000BP Knapsack is constructed from UV Resistant Thermo-welded PVC Canvass, with synthetic yarns.

<ul style="list-style-type: none">• 19 Litre capacity	<ul style="list-style-type: none">• Brass piston shaft/inner brass sleeve
<ul style="list-style-type: none">• Comfortable hand grip on pump	<ul style="list-style-type: none">• Wide filler cap
<ul style="list-style-type: none">• Up to 8m reach on straight jet nozzle	<ul style="list-style-type: none">• Single acting hand pump, protected by outer ABS plastic sleeve



Information:

Dimensions: L x H x W cm	67 x 43cm
Weight: Kg	2kg including hand pump
Warranty:	12 months
Standards/Approvals:	
Manufacturer:	Scott Plastics
Country of Origin:	Canada

Service Intervals	Inspect before and after each period of use
*Operational /Service life expectation	5 years

* Operational/Service life Expectation is an estimation of the whole of life period of each product when installed, maintained and serviced according to the manufacturers recommendation or their warranty conditions. This information is provided as an indicative guide only and in no way implies or suggests an extended warranty or any responsibility of the manufacturer or BRT Fire and Rescue Supplies beyond the nominated warranty period.



Operation:

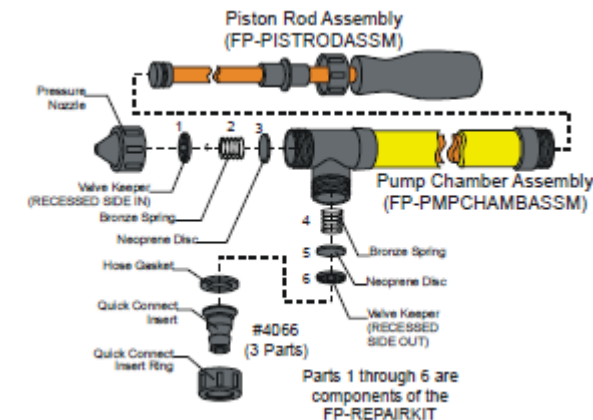
1. Ensure that the Quick Connect shut-off on the 4 foot long Pick-Up Hose is in the off (closed) position. Attach threaded end of pick up hose to outlet on back-pack.
2. Fill back-pack with water (capacity 5 gallons) by opening and pouring the water into the 4" wide filler port. Securely close cap on filler port.
3. Connect the Quick Connect end of the Pick-Up Hose to the male Quick Connect nipple below the check valve on the
4. 4000 Water Hand Pump.
5. Turn the Quick Connect shut-off dial to the ON (open) position.
6. Point nozzle at area to be sprayed. Pull back on pump handle until it stops, push forward (like a bicycle pump). Repeated pumping action will draw water from the back-pack through the pick-up hose.
7. Most users will be able to throw the water stream
8. 25 feet or more.

Testing and Maintenance:

1. Check before and after each period of use for damage to the bladder or hand pump ie holes, leaks.
2. Lubricate the hand pump with Vaseline or waterproof silicone lubricate after each period of use, this is particularly important after using foam concentrate.

Testing and Maint Cont

The diagram below can be used as a reference when cleaning or repair/ replacement parts are required. A complete Repair Kit, including all necessary gaskets, o-rings, neoprene discs and springs is available. The order code for the Repair Kit is FP-REPAIRKIT.



Safety

DO NOT:

- Do not drink water from the knapsack
- Do not place knapsack directly onto heat or into a fire
- Do not drop or throw the knapsack when filled
- Caution should be taken when lifting and carrying filled knapsack
- Always ensure hand pump is operational prior to filling or attempting to use the knapsack.

