



BRT FIRE & RESCUE SUPPLIES

LEADER TIC 3.1

High Resolution Thermal imaging camera

Efficient and small = 1 button

Particularly suitable for the first attack. LEADER TIC 3.1 offers unbeatable value and best quality, ideal for firefighting, first attack, search for missing persons and fire...



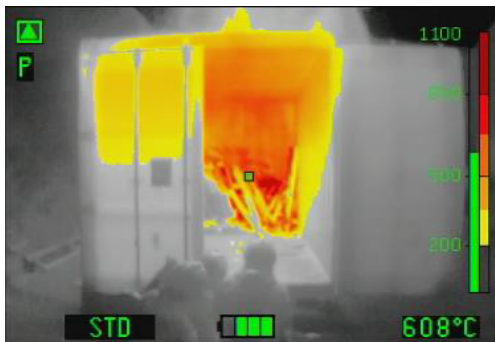
Outstanding features:

- Compact 165 x 140 x 85 mm
 - Lightweight 890g with 2 batteries and side straps.
 - Large 3,5" display for details visibility
 - Widest detection range: -40°C to +1150°C
 - 1 colorization mode
 - Picture Capture and / or Video recording (option)
 - Batteries: 6 year warranty, 5000 charging cycle
 - Safe batteries (LiFePO4): for high temp operations
 - Up to 4h running time with 2 batteries
 - Germanium window to protect the optics
 - Removable Pistol grip option (H: +110mm – W:+ 165g)
 - Boot time < 5 sec
 - 1 Large button: easy to operate even with gloves
- Functions:**
- ON/OFF
 - Image freeze & picture capture (option)
 - Continuous video recording (option)



Colour schemes:

LEADER TIC 3.1 offers one colour scheme: Fire (standard) or Search (option)

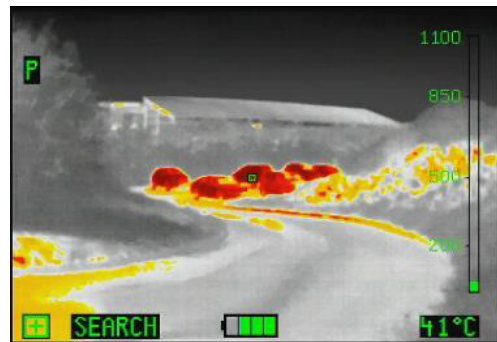


FIRE (Std):

- Dark Red >850°C
- Red > 675°C
- Orange > 500°C
- Dark Yellow >350°C
- Yellow > 200°C
- White = Hot
- Black = cold

3 Sensitivity modes with automatic switch:

- High sensitivity temperature range: -40 +150°C
- Medium sensitivity temperature range: -40 + 500°C
- Low sensitivity temperature range: -40 +1150°C



SEARCH (option):

7 hottest % coloured from red to yellow.

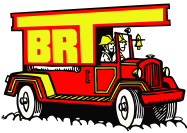


"Quality and Innovative Fire and Rescue Equipment"



www.bigredtruck.com.au
asktheteam@bigredtruck.com.au
Phone: +61 (0)7 3287 5505

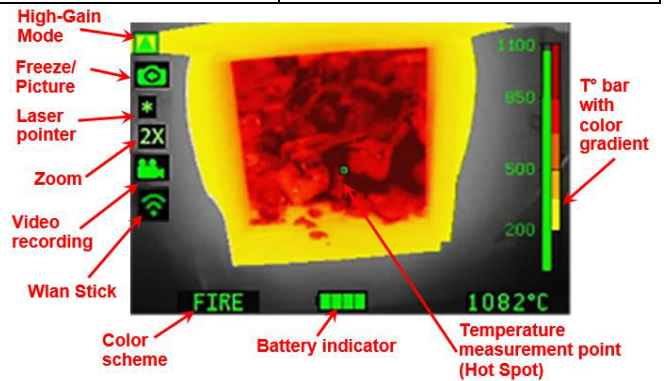
Quality and Innovative Fire Rescue Equipment



Characteristics:

LeaderTic 3.1	320x240
Dimensions	L.165 x W.140 x H.85 mm (H195mm with optional pistol grip)
Weight	855g with 2 batt / 770g with 1 batt (pistol grip +165g, Hand strap +35g)
Display	3,5" LCD / 76.800 Pixel
Frequency	60Hz Fps
T°C Range	-40° to +1150°C
Colorization	Std: Fire, Or option: Search
Housing	
Material	PUR / Elastomer
Drop Test	2m on concrete
IP	IP67 / 1 Meter 30 Minutes
Heat resistance	150°C for 15min / 260°C for 5min
Sensor	
Type	17µ Amorphous Silicon aSi Resolution 384 x 288
Spectral range	7 – 14 µm
T°C sensitivity	0.05°C ±0.01°C
Optics	
Material	Germanium Carbon Coated Protected by a germanium window
Focus	35 cm to infinity
Visual field / FOV	H: 51° V: 40°

General	
Power supply	LiFePO ₄ batteries (83g)
Running time (20°C)	>4h (2 batt) / >2h (1 batt) >3h (2 batt) with DVR (optional)
Boot time	< 5 seconds
Charging voltage	12 / 24 VDC or 230 VAC
Charging time (for 2 batt / consider half for 1 batt)	~ 1h30 min with charging bay ~ 2 hours with main charger
Charging cycles	> 5000
Warranty	5 years on camera 6 years on batteries 10 years on thermal sensor
Options	
Removable Pistol grip (+ 165g)	Picture capture and/or video recording (8GB capacity)
Neck strap in flame retardant material	Vehicle charging bay or main charger
Retractable lanyard	Carrying case (standard or storm case)
Protection hood	Wireless video transmission to computer, tablet or smartphone



Energy concept

LiFePO₄ batteries (lithium-iron-phosphate).

Benefits:

- Very long lifespan guaranteed 5000 charging cycles (~10 years)
- Operating time (3.5h with 2 batteries at the same time in the camera)
- 6 year warranty

Wlan module



Picture and Video recording

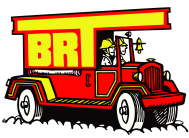
- Live videos can be sent to a computer, tablet or smartphone thanks to optional wireless stick (Wlan module)
- Pictures (up to 1000) and videos (up to 8h) can be downloaded into a computer via an USB cable.

Vehicle Charging Bay

Very space-saving mountable!
A power supply 12/24 VDC or 230 VAC. Capacity to recharge up to 4 batteries at the same time (2 in the camera and 2 spares)



Quality and Innovative Fire Rescue Equipment















Camera standard features:

Designation	Color modes		Features					
	Color modes	Max color modes	Battery	Freeze mode	Side trap	Video recording	Picture capture	USB cable
LEADER TIC 3.1	Fire (std.) or Search	1	1	√	2			
LEADER TIC 3.1 P		1	2	√	2		√	√
LEADER TIC 3.1 V		1	2	√	2	√	√	√

P = Picture
V= Video + Picture

Camera optional accessories:

	Wireless Transmission kit	Only compatible with cameras equipped with Video recording
	Pack of 2 spare batteries	
	Cable charger for Tic 3	Available in 12/24V , 110V or 240V
	Std carrying case	IP24
	Watertight Carrying case	IP67
	Vehicle charging bay	Charge batteries inside the camera

	Vehicle charging bay with additional slots	Charge batteries in the camera + 2 extra spare batteries
	Power supply for charging bay	Exist in 12/24V , 110V or 240V with US or EU plug
	Retractable lanyard	
	Neck strap	
	Protection hood	
	Removable pistol grip	

Quality and Innovative Fire Rescue Equipment

