



# LEADER TIC 3.3

High Resolution Thermal imaging camera

## Efficient and versatile = 3 buttons

Particularly suitable for the first attack. LEADER TIC 3.3 offers unbeatable value and best quality combined with all important features: ideal for firefighting, first attack, search for missing persons and fire...



### Outstanding features:

- Compact 165 x 140 x 85 mm
- Lightweight 890g with 2 batteries and side straps.
- Large 3.5" display for details visibility
- Widest detection range: -40°C to +1150°C
- Video recording, picture capture and image freeze
- Batteries: 6 year warranty, 5000 charging cycle
- Safe batteries (LiFePO4): for high temp operations
- 3.5h running time with 2 batteries
- Germanium window to protect the optics
- Removable Pistol grip option (H: +110mm – W: + 165g)
- Boot time < 5 sec
- 3 Large buttons: easy to operate even with gloves

#### Functions:

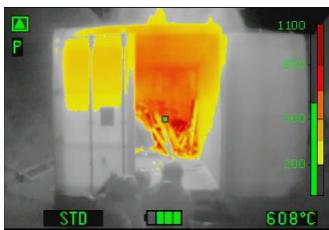
- ON/OFF
- Zoom x2 – x4
- Colorization selection (3 or 5 modes)
- Image freeze / picture capture (option)
- Video recording (option)
- Replay picture and video on screen
- Laser pointer (option)



### Colour schemes:

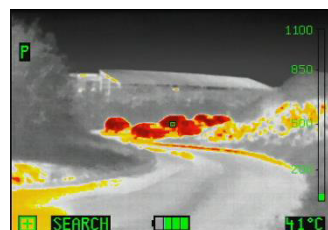
LEADER TIC Mini 3.3 offers

**3 colour scheme as standard: Fire, Search, and Inverse**  
**+2 colour scheme as option: Cold Finder and Multicolour**



#### STD / FIRE:

- Dark Red >850°C
- Red > 675°C
- Orange > 500°C
- Dark Yellow >350°C
- Yellow > 200°C
- White = Hot
- Black = cold



#### SEARCH:

7 hottest % coloured from red to yellow.



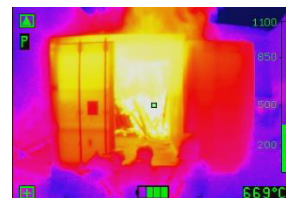
#### COLD Finder:

Blue colour for coldest areas



#### INVERSE:

- White = Cold
- Black = hot



#### MULTICOLOUR:

For Industrial applications

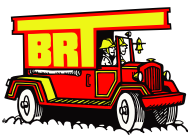
### 3 Sensitivity modes with automatic switch:

- High sensitivity temperature range: -40 +150°C
- Medium sensitivity temperature range: -40 + 500°C
- Low sensitivity temperature range: -40 +1150°C



www.bigredtruck.com.au  
asktheteam@bigredtruck.com.au  
Phone: +61 (0)7 3287 5505

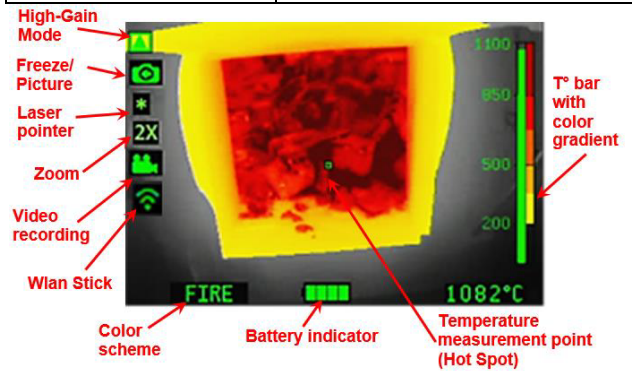
Quality and Innovative Fire Rescue Equipment



**Characteristics:**

LeaderTic 3.3	320x240
<b>Dimensions</b>	L.165 x W.140 x H.85 mm (H195mm with optional pistol grip)
<b>Weight</b>	855g with 2 batt / 770g with 1 batt (pistol grip +165g, Hand strap +35g)
<b>Display</b>	3,5" LCD / 76.800 Pixel
<b>Frequency</b>	60Hz Fps
<b>T°C Range</b>	-40° to +1150°C
<b>Colorization</b>	Std: Fire, Search, Inverse Option: Cold Finder and Multicolour
Housing	
<b>Material</b>	PUR / Elastomer
<b>Drop Test</b>	2m on concrete
<b>IP</b>	IP67 / 1 Meter 30 Minutes
<b>Heat resistance</b>	150°C for 15min / 260°C for 5min
Sensor	
<b>Type</b>	17µ Amorphous Silicon aSi Resolution <b>384 x 288</b>
<b>Spectral range</b>	7 – 14 µm
<b>T°C sensitivity</b>	0.05°C ±0.01°C
Optics	
<b>Material</b>	Germanium Carbon Coated Protected by a germanium window
<b>Focus</b>	35 cm to infinity
<b>Visual field / FOV</b>	H: 51° V: 40°

General	
<b>Power supply</b>	LiFePO <sub>4</sub> batteries (83g)
<b>Running time (20°C with 2 batteries)</b>	>3.5 Hours >3 Hours with DVR (optional)
<b>Boot time</b>	< 5 seconds
<b>Charging voltage</b>	12 / 24 VDC or 230 VAC
<b>Charging time</b>	~ 1h30 min with charging bay ~ 2 hours with main charger
<b>Charging cycles</b>	> 5000
<b>Warranty</b>	5 years on camera 6 years on batteries 10 years on thermal sensor
Options	
Removable Pistol grip (+ 165g)	Picture capture and/or video recording (8GB capacity)
Laser pointer	2 additional Colour modes: Multicolour and Cold finder
Neck strap in flame retardant material	Vehicle charging bay or main charger
Retractable lanyard	Carrying case (standard or storm case)
Protection hood	Wireless video transmission to computer, tablet or smartphone



**Energy concept**

LiFePO<sub>4</sub> batteries (lithium-iron-phosphate).

**Benefits:**

- Very long lifespan guaranteed 5000 charging cycles (~10 years)
- Operating time (3.5h with 2 batteries at the same time in the camera)
- 6 year warranty

Wlan module



**Picture & Video recording**

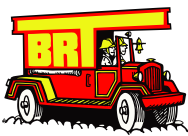
- Pictures (up to 1000) and Video (up to 8h) can be:
- viewed on the camera screen during operation
  - Live Videos can be sent to a computer, tablet or smartphone thanks to optional wireless stick (Wlan module).
  - Downloaded into a computer via an USB cable

**Vehicle Charging Bay**

Very space-saving mountable!  
A power supply 12/24 VDC or 230 VAC. Can charge up to 4 batteries at the same time (2 in the camera and 2 spares)



**Quality and Innovative Fire Rescue Equipment**



**Camera standard features:**

Description	Color modes			Features							
	Color modes	Optional color modes	Max color modes	Battery	Freeze mode	Side trap	Video recording	Picture capture	Laser	Zoom	USB cable
LEADER TIC 3.3	Fire & Search & Inverse	Multicolour or Cold	5	2	√	2				√	
LEADER TIC 3.3 L			5	2	√	2			√	√	
LEADER TIC 3.3 V			5	2	√	2	√	√		√	√
LEADER TIC 3.3 VL			5	2	√	2	√	√	√	√	√

V= Video + Picture  
L = Laser

**Camera optional accessories:**

	<b>Wireless Transmission kit</b>	Only compatible with cameras equipped with Video recording		<b>Vehicle charging bay with additional slots</b>	Charge batteries in the camera + 2 extra spare batteries
	<b>Pack of 2 spare batteries</b>			<b>Power supply for charging bay</b>	Exist in 12/24V , 110V or 240V with US or EU plug
	<b>Cable charger for Tic 3</b>	Available in 12/24V , 110V or 240V		<b>Retractable lanyard</b>	
	<b>Std carrying case</b>	IP24		<b>Neck strap</b>	
	<b>Watertight Carrying case</b>	IP67		<b>Protection hood</b>	
	<b>Vehicle charging bay</b>	Charge batteries inside the camera		<b>Removable pistol grip</b>	



**BIG RED TRUCK**

"Quality and Innovative Fire and Rescue Equipment"

www.bigredtruck.com.au  
asktheteam@bigredtruck.com.au  
Phone: +61 (0)7 3287 5505

**Quality and Innovative Fire Rescue Equipment**