

YOUR **PERSONAL TIC.** ONE FOR EACH FIREFIGHTER.

Reveal™

POWERFUL THERMAL IMAGING CAMERA AND 300 LUMEN LED LIGHT

Durable, handheld TIC, with a wide 36-degree field of view and high-performance thermal sensor, the Seek Reveal is the perfect tool for search and rescue, personal navigation, situational awareness, and hot spot identification.



206 x 156
Thermal
Sensor



36°
Field of
View



-40° F to 626° F
Detection
Range



500 ft
Distance



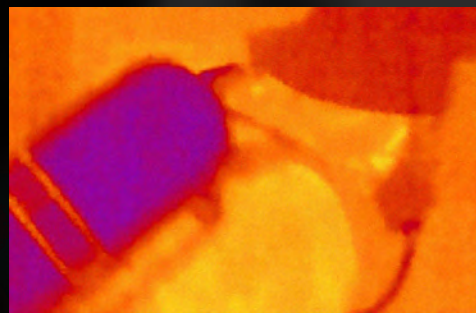
Works
Day & Night



seek
thermal



WWW.BIGREDTRUCK.COM.AU



PERFORMANCE FOCUSED

- 206 x 156 thermal sensor that allows for quick and accurate decision making
- Wide dynamic temperature range to 330 degrees Celsius (626 Fahrenheit)
- Battery lasts up to 10 hours on a single charge
- Affordable and easy to maintain

INFRARED THERMAL TECHNOLOGY THAT'S EASY TO USE

- Quick startup provides instant detection
- Intuitive, single-handed interface
- Library of color palettes to customize the built-in display
- Micro SD card for photo capture and USB transfer

RUGGED AND RELIABLE

- Quickly scan for hot spots during overhaul
- See through smoke to locate stranded victims and crew
- Complete the 360 size-up faster when seconds count
- Accurately inspect fire hazards such as electrical and mechanical equipment

SPECIFICATIONS

DETECTOR & OPTICS	DESCRIPTION
Thermal Sensor	206 x 156
Detection Distance	500 feet (165 yards, 150 meters)
Field of View	36 Degree FOV
Temperature Range	-40F to 626F (-40C to 330C)
Frame Rate	< 9 Hz
Focus	Fixed Focus
Lens Material	Chalcogenide
Microbolometer	Vanadium Oxide
Pixel Pitch	12 Microns
Spectral Range	7.5 - 14 Microns
SYSTEM SPECS	
Flashlight	300 Lumen LED (programmable brightness)
Display Resolution	2.4" Color, 240 x 320
Temp. Display Scale	Fahrenheit or Celsius
Color Palettes	7 Options
Startup Time	< 3 seconds
User Interface	Self-contained device with 3 button navigation
Storage Media	MicroSD Card Included
Battery	3.7V Rechargeable lithium
Battery Life (operating)	Up to 10 hours continuous thermal
DEVICE & PACKAGE INFO	
Country of Origin	Designed and manufactured in Santa Barbara, California, USA with global components
Color	Blue
Device Dimensions (H x W x D)	5 x 2.4 x 1.2 inches
Device Weight	6.25 ounces
Box Dimensions (H x W x D)	6.25 x 3.75 x 3.25 inches
Package Weight	18.5 ounces
Included in the box	Seek Reveal, Welcome Guide, Wrist Lanyard, MicroSD Card, and USB Cable

For support and user guides visit support.thermal.com

Reveal™

Seek™
thermal

WWW.BIGREDTRUCK.COM.AU

